

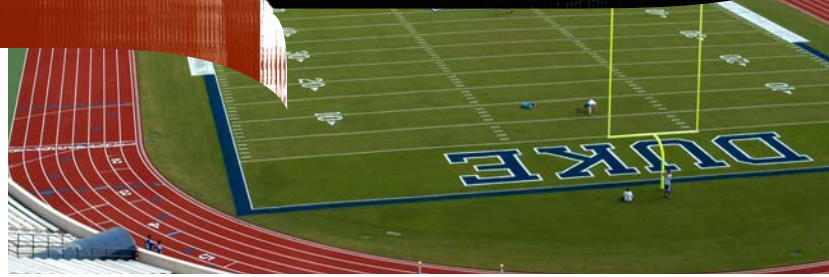
BSS.1000



DUAL DUROMETER TRACK SYSTEM

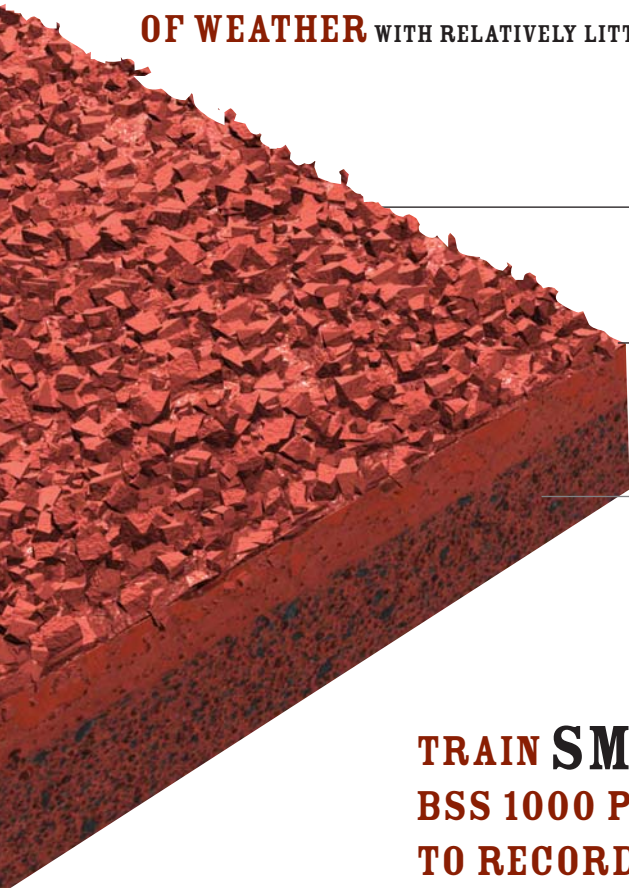
**AT EVERY PRACTICE, IN EVERY RACE,
YOUR ATHLETES GIVE YOU THEIR ALL.**

THEY DESERVE A TRACK SYSTEM THAT ALLOWS THEM TO PUSH
THEIR PERFORMANCE TO THE LIMIT—THE BSS 1000.



DESIGNED BY OUR EXPERIENCED TEAM OF CHEMISTS AND ENGINEERS, THE BSS 1000 IS **THE OPTIMUM TRAINING AND
COMPETING SURFACE**. ITS BIO-ENGINEERED FORCE REDUCTION LAYER INTEGRATES VERY FINE SBR RUBBER WITH
ENVIRONMENTALLY FRIENDLY POLYURETHANE TO CREATE AN IMPERMEABLE SHOCK-ABSORBING CUSHION. YOUR CHOICE OF EMBEDDED
OR ENCAPSULATED EPDM GRANULES ARE MIXED THROUGHOUT THE TOP WEAR LAYER GIVING YOUR ATHLETES TOTAL CONTROL

GUARANTEED BY A FIVE—YEAR WARRANTY, THE BSS 1000 IS DURABLE ENOUGH TO **RESIST THE ROUGHEST
OF WEATHER** WITH RELATIVELY LITTLE MAINTENANCE.



○ Sharp, precise markings and a monolithic surface make this system ideal for world-class competitions.

○ EPDM granules are mixed throughout the top wearing surface to ensure traction over the life of your system.

○ The force reduction layer provides the resilience and shock absorption necessary to meet the rigorous demands of IAAF performance specifications.



MEETS IAAF
PERFORMANCE
SPECIFICATIONS

**TRAIN SMARTER. COMPETE HARDER. THE
BSS 1000 PUSHES ATHLETIC PERFORMANCE
TO RECORD-BREAKING LIMITS.**